



Office of the Chief Scientific Adviser

Connecting life sciences to our economy

Professor Anne Glover

Chief Scientific Adviser for Scotland

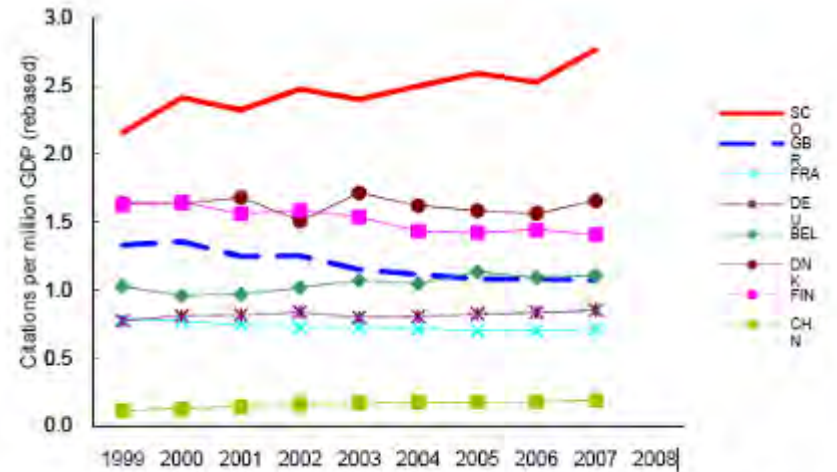


Office of the Chief Scientific Adviser

Scotland - world leading research

- Scotland's research cited more than any other country in comparison to its GDP
- Citations have risen to 1.8% of world citations

Chart 5.02 Citations per million GDP



Data: Thomson Reuters & OECD. Analysis: Evidence

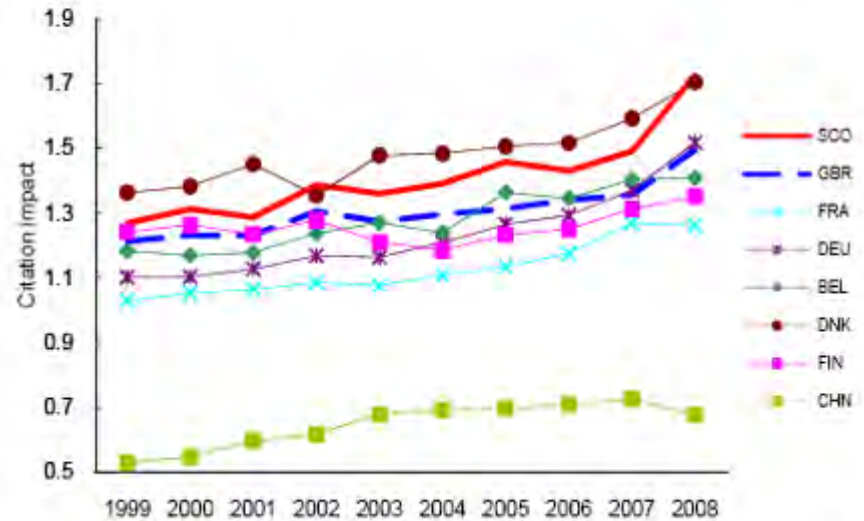


Office of the Chief Scientific Adviser

Impact of research in Scotland

- Research impact, measured as citations per paper, has been well above world average in recent years
- Increased by a further 21% in 2008

Chart 1.09 Citation impact



Data and analysis: Evidence, Thomson Reuters



Office of the Chief Scientific Adviser



Scottish Centre for Regenerative Medicine



**Leading international researchers
(drug development, therapeutics and diagnostics)**





Office of the Chief Scientific Adviser

Scotland is a premier location for health sciences

- **Integrated & supportive approach to Life Sciences**
- **Proven, effective collaboration ethos**
- **Stable population, high rates of morbidity and chronic disease & willingness to contribute to clinical research**
- **Universities & NHS Scotland work closely together to deliver excellence in translational and clinical research**
- **Biomedical infrastructure renewed & expanded in the last five years**



Current Collaborative Initiatives



Office of the Chief Scientific Adviser

Current collaborative projects

- **Translational Medicine Research Collaboration (TMRC)**
 - Pfizer, 4 Universities/Medical Schools, NHS Scotland, Scottish Enterprise
- **Scottish Academic Health Sciences Collaboration (SAHSC)**
 - £15 m/pa underpinning 280 research positions
 - Competitive advantage in speeding the development of stratified/ personalised medicine
 - One-stop harmonised and streamlined system for contracting and costing clinical studies
- **Generation Scotland**
 - Follow health of 50,000 Scots family members over the next generation
 - Investigate genetics & lifestyle factors re cancer, CVD & mental illness
- **Metabolism – Scottish Diabetes Research Network**
 - Establishes an integrated clinical trials infrastructure between the 4 major academic centres in Scotland & their associated managed clinical networks
 - **Additional clinical networks** Child Health, Mental Health, Oncology & Stroke
- **SINAPSE - Imaging consortium**
 - £40 m Scottish NeuroImaging Research Network

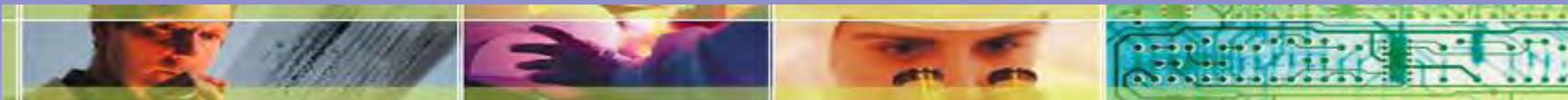


Office of the Chief Scientific Adviser



We have a world leading research base – how do we grow a sustainable company base?

- Retain, build and attract world-class businesses of scale
- Increase inward investment
- Stimulate and attract new high growth SMEs



Office of the Chief Scientific Adviser

Success stories



SCottish Institute for ceLL Signalling (SCILLs)
at the University of Dundee



Office of the Chief Scientific Adviser

- Colocated with world class research and expertise
- 1.4 m sq ft of life science R&D space
- £12 m, 5 y commercialisation support programme
- Best in class wet/dry labs and business environment
- Ready access to capital
- Strategic UK life sciences site





Office of the Chief Scientific Adviser

Key to success

- Connectivity – “One Scotland”
- Skilled workforce
- Closeness to a vibrant academic and biotech hub
- Government focus and support
- Overall infrastructure support
- Commercial marketplace



Courtesy Aberdeen Magazine; UoA



Office of the Chief Scientific Adviser

Office of the Chief Scientific Adviser

St Andrew's House

Regent Road

Edinburgh EH1 3DG

Telephone: 0131-244 2192

<http://www.scotland.gov.uk/Topics/Business-Industry/science>